

SUTTON HOUSE

NEWS

-Sutton House Society



In the last issue of the newsletter we reported that Sutton House had been awarded a Commendation in the 1994 INTERPRET BRITAIN AWARDS. The award was presented by Angus Stirling, Director General of the National Trust, to Gayne Wells, Chairman of the Sutton House Local Committee. The ceremony took place at Sutton House on Tuesday 7 February.

HACKNEY ON THE EUROPEAN MAP

Tuesday 7 February was an exciting day for those involved in the Sutton House project as it was announced that we had received a second accolade, a EUROPA NOSTRA AWARD for "the scholarly and painstaking restoration of an important Tudor house, enabling it once again, to play its part in the life of the community".

The Europa Nostra Awards, which are sponsored by the American Express Foundation, are made annually to projects which make a distinguished contribution to the conservation and enhancement of Europe's architectural and natural heritage.

Hackney's cultural identity was given a further boost when it was announced that our neighbours, the Geffrye Museum had also received a diploma for the creation of a new entrance hall to the museum.

In addition to Sutton House and the Geffrye Museum which are both located in the London Borough of Hackney, Europa Nostra awarded diplomas to two other London sites; the Mansion House and the Old Royal Observatory at Greenwich. In the UK diplomas were awarded to eight sites in total.

SUTTON HOUSE LOCAL COMMITTEE ANNUAL PUBLIC MEETING Thursday 30 March 1995 at 8pm

The Sutton House Local Committee, which has management responsibility for all aspects of the Community Scheme, will present its Annual Report for 1994 following an address by Dame Jennifer Jenkins on the subject of "The Importance of Local Involvement". For Sutton House Society members it will also be an opportunity to see the new specially printed carpet for the East staircase, part of the Sutton House Society's Phase 2 fundraising target.

MARCH 1995

No. 17

^THE WALKING SEASON BEGINS...

SERMONS IN STONE

Saturday 1st April, 2pm

Join local historian, Mike Gray and Dr Eric Robinson, President of the Geologist's Association as they investigate The Geology and History of Hackney Churchyard.

The walk lasts for about 2 hours and starts at Sutton House. Tickets are £3, £2 concessions.



GREEN HACKNEY

Sunday 2nd April, 10am

Mike Gray leads walkers through Hackney's 'Green Belt', from Stamford Hill to Sutton House. The walk lasts 3 hours or more and starts from Safeways (corner of Amhurst Park and Stamford Hill). Stout shoes are recommended.

Tickets are £4 and £3 concessions

DOING THE SOUTH DOWNS WALK, Oi!

A sponsored walk in aid of the Sutton House Appeal, to be led by Richard Moss, the Society's Chairman, will take place on Saturday 20 May over the first stage of the South Downs Way. This stage runs for nearly 11 miles from the Meads end of the seafront at Eastbourne to Alfriston.

The path is good but since the route goes over the top of Beachy Head and the rolling downs of the Seven Sisters, there will be several hundred feet of ascent. The walk should take between four and five hours, with a break for lunch. Walkers are recommended to bring their own refreshments but cafes and pubs will be open in Alfriston at the end of the walk.

In addition to enjoying the varied and largely unspoilt countryside, some of which is owned by the National Trust, walkers will cross the open downland of Michel Dean which, like Sutton House, came to the National Trust in the 1930s with the aid of the Robertson Bequest.

At Alfriston, walkers will be able to visit the Clergy House, a restored Wealden hall house which dates from the 14th century and was the first building acquired by the National Trust in 1896.

Those who watched the television adaptation of Fay Weldon's "The Life and Loves of a She-Devil", which was originally screened by the BBC in 1986, will recognise the old Belle Tout lighthouse which was subsequently converted into a dwelling house and was inhabited during the series by the unfortunate Bobbo, played by Dennis Waterman, and his mistress, Mary, played by Patricia Hodge.

It is hoped to organise a minibus or coach to take walkers from Hackney to Eastbourne and back from Alfriston to London.

All those who are interested in taking part in this walk are asked to complete the booking form enclosed and to return it to Sutton House as soon as possible. A sponsorship form will then be sent to you.

SADLEIR NABS NED KELLY - GET IT ?

No, how could you! Well, I too was surprised when a few Sundays ago Rosemary Gihbs (nee Sadleir) visited Sutton House and told me the story of her great grandfather, John Sadleir, who played a leading role in the capture of Ned Kelly and his gang in Australia in 1880.

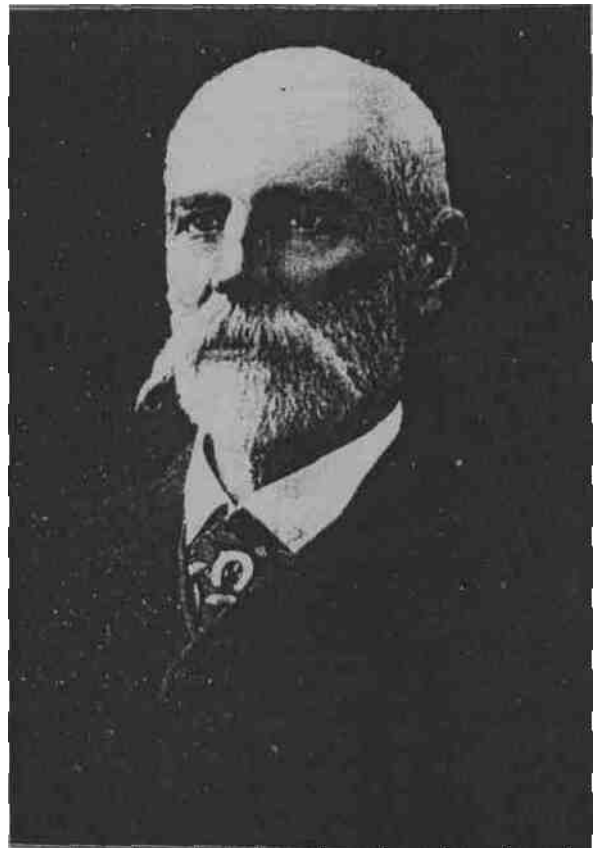
John Sadleir was born in Ireland in 1833, a descendant of Ralph Sadleir, builder of Sutton House and probably related to the same branch of the Sadleir family as several members of the family we have made contact with over the past few years. John Sadleir emigrated to Australia in 1852 on the maiden voyage of the S.S. Great Britain. He was accompanied by his brother Nicholas and one other brother 'about whom absolutely nothing is known'. He had a successful career in the police force and wrote about his part in the capture of the infamous Ned Kelly in 'Recollections of a Victorian Police Officer'. When Rosemary visited Sutton House she was struck by the strong family likeness and the persistence of names in the family. John Sadleir had a son Henry, 'our' Ralph's father was also named Henry, and the photograph of John reproduced here shows a remarkable likeness to the effigy on Ralph Sadleir's tomb in Standon Church which, she says, could have been other late father, Ralph.

So, it was another of those remarkable experiences which so often occur in Sutton House and which makes it such a rewarding and surprising place.

Carole Mills



RALPH SADLEIR 1507-1587



JOHN SADLEIR 1833-1909

CALL FOR HELP!

We are looking for more volunteers to cover the extra Summer opening hours and to enable us to give a good service to all our visitors. The duties are many and various (shop, reception desk, stewarding, ushering at concerts and guiding. Whilst a regular commitment is helpful, it is not essential and should not put off anyone who would like to get more involved. We understand how things 'come up' which is why our rotas are flexible and our team is very adaptable. Without this help it would be impossible to promote the varied programme of events which has made the scheme so successful.

If you can find some time to help us, please come along to the Introductory Session for Volunteers being held in Sutton House on Tuesday 4 April at 7pm when Hilda Brown and Dennis Sullivan, two of our hardest working volunteers, will outline just what's involved. If you cannot come along that evening, there will be a follow-up meeting on Tuesday 11 April at the same time. BUT even if you cannot make either date, that should not deter you a phone call to the office will get you started.



APPEAL FOR SECOND-HAND BOOKS PLEASE AS STOCKS ARE VERY LOW



TYING THE KNOT AT SUTTON HOUSE

If you have been keeping abreast of home affairs news you may know that from Saturday 1st April it will be legally possible to hold a civil marriage ceremony outside a church or registry office.

Sutton House, which has already proved to be a very popular venue for wedding receptions, will be applying for a license for the 'solemnization of marriages'. If approved, the earliest that this can come into force will be the end of August and we have already received several enquiries.

The opportunity to experience a complete wedding celebration at Sutton House will, we are sure, be attractive to many couples but, they should note that the law does not permit use of the chapel.



CENTENARY FAYRE - SATURDAY 24 JUNE 1 lam - 5pm

The impetus to put together a festival event has come from Sutton House, St.John-at-Hackney and Ram's Episcopal (Hackney Free & Parochial) Primary School. 1995 marks the centenary of the building of the school in Isabella Road after the purchase of Sutton House and its spacious gardens by the then Rector of Hackney. Together, we are planning a midsummer open-air event on Saturday 24 June to be followed by several events during the following week which culminates with the Hackney Show, the modern day equivalent of the traditional 'village fayre'.

Although the next newsletter and What's On will give details of the full programme please put the date in your diary - SATURDAY 24 JUNE. We hope to be able to use the large field in Hackney Churchyard as well as the school, St John at Hackney and St. John of Jerusalem churches and Sutton House. There will be historic walks and talks, bell-ringing, tent-pitching, dancing and music, exhibitions and displays. If you are involved with a local group in central Hackney and want to participate please contact Carole Mills at Sutton House.

W hats on

DREAMING IN THE JUNGLE

1 - 30 April

Additions to the Spring Programme

An exhibition of work by Hackney Community College art therapy course students on the art therapy course will be on display in the Gallery during April and is sure to bring a burst of colour and creativity to the house

The Gallery is open Wednesday - Sunday from 11.30 until 5.00

*The Richest crop for any field
Is a crop of bricks for it to yield
The Richest crop that it can grow
Is a crop of houses in a row.*

YOUNG NATIONAL TRUST THEATRE

(from a builder's prospectus 1875)

Over the next few weeks, the YNTT will be in Sutton House rehearsing their centenary production 'For Any Field' - an examination of the Victorians and their attitude to conservation. At the end of rehearsals the company wants to involve children between 8-11 years to participate in the Dress Rehearsal on Thursday 20 April before the company goes on tour, presenting the production all over the country. Prior booking is required and strict adherence to the age limits as the production has been prepared for school groups in Years 5 and 6. Please telephone 0181-986 2264 to book.

FREE ENTRY DAY Saturday 15 April

Easter Saturday we will be open to visitors without charge to mark the commencement of Summer Saturday Visitor Days. We will be open from 2.00 - 5.00 and will continue this additional opening until the end of October. We will also open on Wednesday and Friday evenings between 7-9.30 during July. We hope these extended hours will make it possible for more members and their friends to visit us.

SUPPER CLUB NEWS

Dr David Starkey, who gave the first Sutton House Society Annual Lecture in 1992, was persuaded to return to Sutton House on 3 March. His excellent talk on this occasion, entitled 'Inventing the Portrait: Holbein and his Sitters' was as funny as it was learned and featured a memorable series of "Tudor poses". The audience heard much about the life of Henry VIII's court, its structure and the way Holbein's portraiture fitted into both. Attempts to persuade David Starkey to commit himself on the identification of the Holbein portrait of a young man as Ralph Sadleir (see September 1991 newsletter) were unavailing! The talk was followed by one of Glen Sillett's usual delectable suppers - this one with Tudor overtones.

The next supper club should prove equally fascinating albeit very different. Please complete the booking form opposite and send back to Sutton House.

Lissa Chapman

OPEN ALL HOURS

Grumbolds Cafe-Bar at Sutton House has extended its opening hours due to popular demand. Grumbolds is now open on Wednesday, Thursday and Friday from 1 lam to 11pm, serving lunches, teas and drinks and in addition, serving dinner from 7pm to 10pm. So if you live or work in Hackney why not pop in for early evening drinks or supper. Saturday and Sunday opening times remain unchanged - 1 lam to 5pm.

NEW EVIDENCE OF TUDOR HOMERTON

Just to the East of Sutton House, behind the advertising hoardings by Link Street, there used to be an old factory or warehouse largely hidden within a jungle of sycamores. Recently the site has been cleared by a housing association to make way for a development of flats and houses but, because of its closeness to Sutton House, Hackney's Conservation Officer felt that an Archaeological survey should be made first. This was carried out by the Museum of London during the first week of March. Although the final report is awaited, it is clear that some Tudor brick structure, probably the floor of the cellar, was found.

It is known from the Deed of Sale of Sadleir's Hackney estate in 1550 that he possessed, in addition to Bryk Place (Sutton House), several other houses including one to the East of Sutton House which had 'three dayworks' of land attached, roughly a couple of acres, between Homerton High Street and Hackney Brook. The only probable position for such a piece of land is on this site. It does seem likely therefore, that the newly found Tudor remains were associated with this house (which was not mentioned in Sadleir's account book of 1540, and therefore was probably built by Sadleir himself between 1540 and 1550.

We know also from later records that Captain John Milward owned two houses in Homerton, one occupied by the Duchess of Warwick, the other by himself. It is therefore likely that the houses were sold on together through the Machell years and into the 1640's at least, when Milward sold both.

This new discovery comes at an important time because English Heritage and the National Trust have this month, come to an agreement about the publication of an academic monograph, to be published in 1996, on the history of the structure of Sutton House. It is be edited by Victor Belcher, a member of the Sutton House Local Committee and formerly of English Heritage.

M.L.G.

SUTTON HOUSE SOCIETY SUPPER CLUB

Friday 7 April 1995

7.30pm

Speaker: Beth Davie

£12.50 including supper.



**"Discoveries of Dowsing:
The Underground Tunnels at Waltham Abbey"**

Please return to: Supper Club, Sutton House, 2&4 Homerton High Street, London E9 6JQ. Cheques should be made payable to National Trust Enterprises. Please note tickets will not be issued for this event.

Please may I have place(s) for the Supper Club on Friday 7 April.

I enclose a cheque for £.....

Name:.....

Address:.....

SOUTH DOWNS WAY SPONSORED WALK



I would like to take part in the South Downs Way Sponsored Walk on Saturday 20 May 1995

Name:.....

Address:.....

Telephone:.....

Please return to Sponsored Walk, Sutton House Society, 2 & 4 Homerton High Street, Hackney, L9 6JQ

